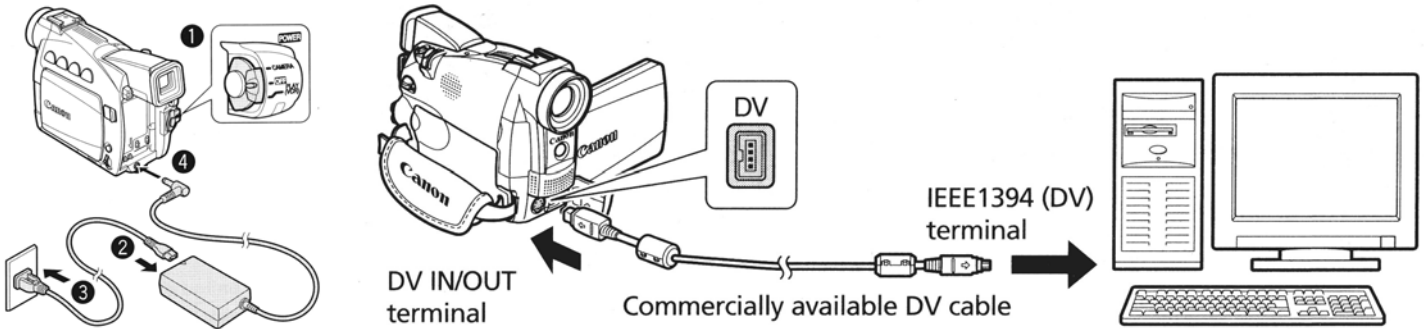
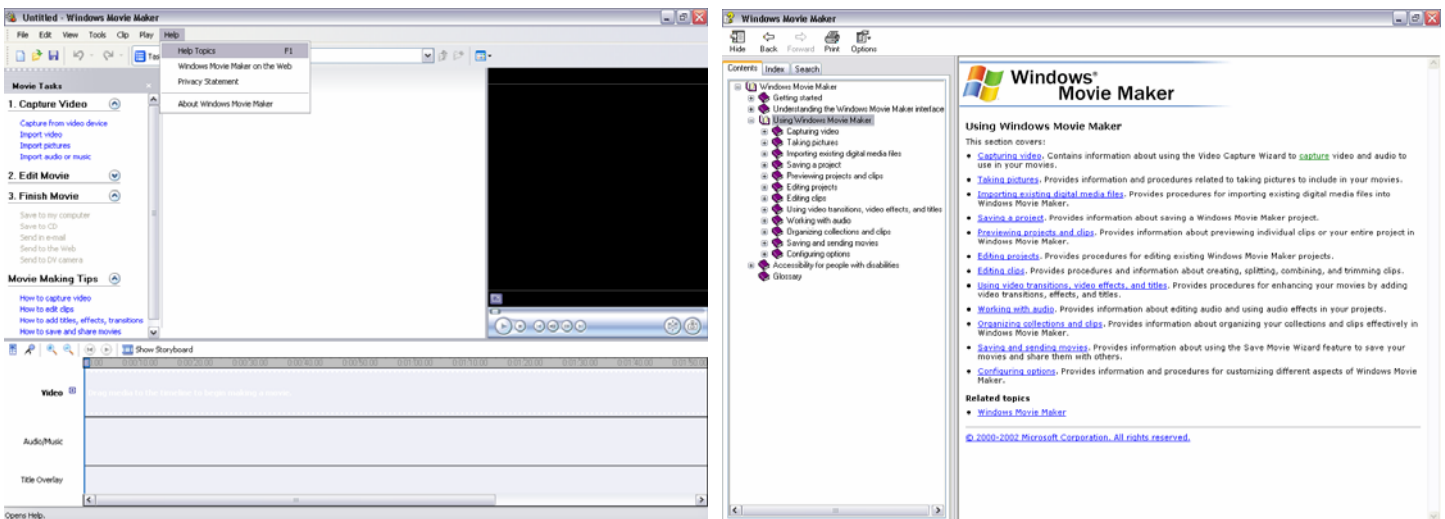


## Windows Movie Maker Instructions

1. Connect the DV camcorder to the computer with the FireWire cable (*IEEE 1394 cable*)
2. Connect the DV camcorder to its power supply.



3. Turn the computer on and log in as; user: student, password: student.
4. Open Windows Movie Maker, and open help menu for detailed instructions (press F1).



### To capture parts of video from a tape in a DV camera

1. Make sure your DV device is connected properly to the FireWire cable, and then set the camera mode to play (VCR).
2. On the **File** menu, click **Capture Video**. -or- In the Movie Tasks pane, under **Capture Video**, click **Capture from video device**.
3. On the **Video Capture Device** page, in **Available devices**, click the DV camera.
4. In the **Enter a file name for your captured video** box, enter a file name for your captured video file.
5. In the **Choose a place to save your captured video** box, choose a file or create a new file on the D, E, or F drive.
6. On the **Video Setting** page, select the **Best quality for playback on my computer (recommended)** video setting
7. On the **Capture Method** page, click **Capture parts of the tape manually**.
8. Locate the video and audio you want to capture from your tape by using either the controls on your DV camera or VCR or the **DV camera controls** in the wizard.
9. To begin capturing video, click **Start Capture**. The tape plays automatically and capturing begins.
10. When the tape reaches the point at which you want to stop capturing, click **Stop Capture**.
11. Repeat steps 8 through 10 for each part of the video tape you want to capture.
12. When you have finished capturing, click **Finish** to close the Video Capture Wizard.

## Editing projects

To start a project and begin creating your movie, you need to add any imported or captured video, audio, or pictures to the storyboard/timeline. The clips on storyboard/timeline become the contents of your project and future movie.

You can use the storyboard/timeline to create and edit projects. The storyboard and timeline both display your work in progress, but each provides a different view of your work:

- The storyboard displays the sequence of clips.
- The timeline displays the timing of clips.

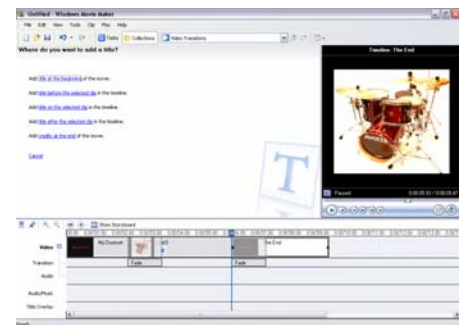
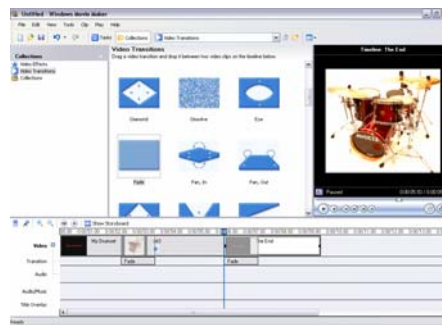
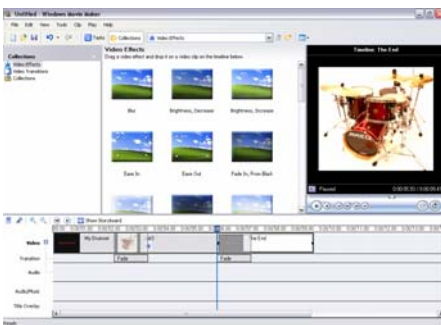
You can switch between the storyboard and timeline as you work on a project.

After you add clips to the storyboard/timeline to create a project, you can do the following:

- Rearrange the clips in the sequence you want.
- Create transitions between clips.
- Add video effects to video clips and pictures.
- Trim the clips to hide unwanted segments (on the timeline view only).
- Split and combine clips.
- Add narration that synchronizes with the clips (on the timeline view only).

As you work on a project, you can preview it in the monitor at any time to get an idea of the end result. You can save your work-in-progress as a Window Movie Maker Project (.MSWMM)

Before you can save your finished movie to a CD, you must first save it as a movie file (.WMV)



## To save a movie on your computer

1. On the **File** menu, click **Save Movie File**, and then click **My computer**. -or- In the Movie Tasks pane, under **Finish Movie**, click **Save to my computer**.
2. In the **Enter a file name for your saved movie** box, type a name for your movie.
3. In the **Choose a place to save your movie** box, choose a folder or create a new folder on the D, E, or F drive.
4. On the **Movie Setting** page, click **Best quality for playback on my computer (recommended)**.
5. If you want to watch your movie after completing the wizard, select the **Play movie when I click Finish** check box.
6. After the movie is saved, click **Finish**.

